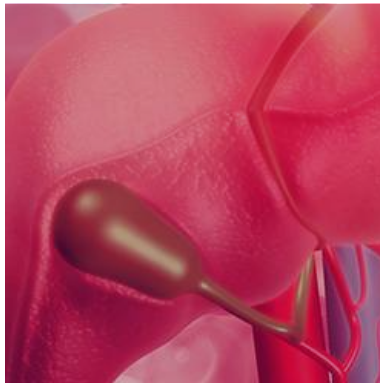
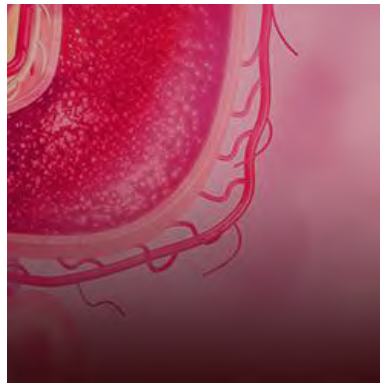


# GASTROENTEROLOGY



## PRODUCT CATALOG



<b>INTRODUCTION.....</b>	<b>02</b>
<b>FEEDING DEVICES.....</b>	<b>03-04</b>
<b>ENJFT</b> - Endoscopic Naso Jejunal Feeding Tube.....	03
<b>NJFT</b> - Naso Jejunal Feeding Tube.....	04
<b>HEMOSTASIS.....</b>	<b>05</b>
<b>SCN</b> - Sclerotherapy Needle.....	05
<b>BILIARY STENTS &amp; INTRODUCERS.....</b>	<b>06-09</b>
<b>BS</b> - Biliary Stents.....	06
<b>BSST</b> - Biliary Stents Standard PTFE.....	07
<b>BSDP</b> - Biliary Stents Double Pigtail.....	08
<b>Majestick</b> - Biliary Stents Introducer.....	09
Pusher.....	09
<b>PANCREATIC STENTS.....</b>	<b>10</b>
<b>PAN</b> Stents.....	10
<b>GUIDEWIRES.....</b>	<b>11-13</b>
<b>Cobra</b> Nitinol Guidewire.....	11
<b>HyGuide</b> Hydrophilic Guidewire.....	11
<b>FlexiGuide</b> Standard - Straight Tip Guidewire.....	12
<b>FlexiGuide</b> Standard - J Tip Guidewire.....	12
<b>TITAN</b> Lunderquist Guidewire.....	13
<b>INFLATION DEVICE.....</b>	<b>14</b>
<b>Advanced</b> Inflation Device.....	14

## Product Warranty

**Allwin** warrants that at the time of manufacturing, the products are prepared and tested in accordance with highest standards. Due to biological differences in individuals, no product is 100% effective under all circumstances for all patients. Further, because we have no control of the condition under which the product is used, diagnosis of patient, the method of use or administration and handling & storage of the product after it leaves our possession, we do not warrant any consequence which may arise pertaining to the final use of the device. The foregoing warranty is exclusive and in lieu of all other warranties written, oral or implied. No representative of **Allwin** may change any of the foregoing and the buyer accepts the product subject to all terms hereof.

## Design Changes

Continuous improvements is the chosen path at **Allwin** and we reserve the right to change or discontinue any product without notice.

## Return Goods Policy

**Allwin** will accept returned goods only after issuing a Return Goods Authorisation (RGA) to the requester within 30 days of purchase. The request for return must be accompanied by reason for return, invoice number and order number. Credit will be issued as per company rules effective at the time of return and mentioned in RGA. Special, opened & damaged products are not returnable.

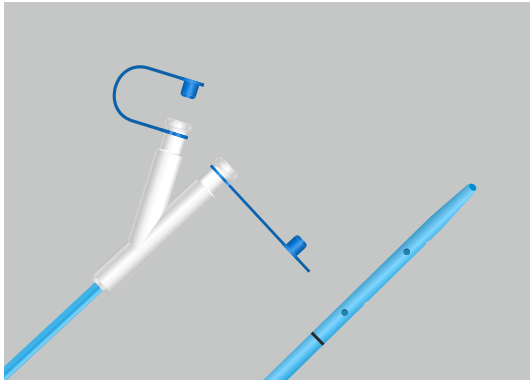
## Special Orders

**Allwin** welcomes new ideas and will manufacture new special items, if it is within the capability of the company. Modification to the original design of any product can be made with only a slight delay in delivery schedule.

## Storage of Products

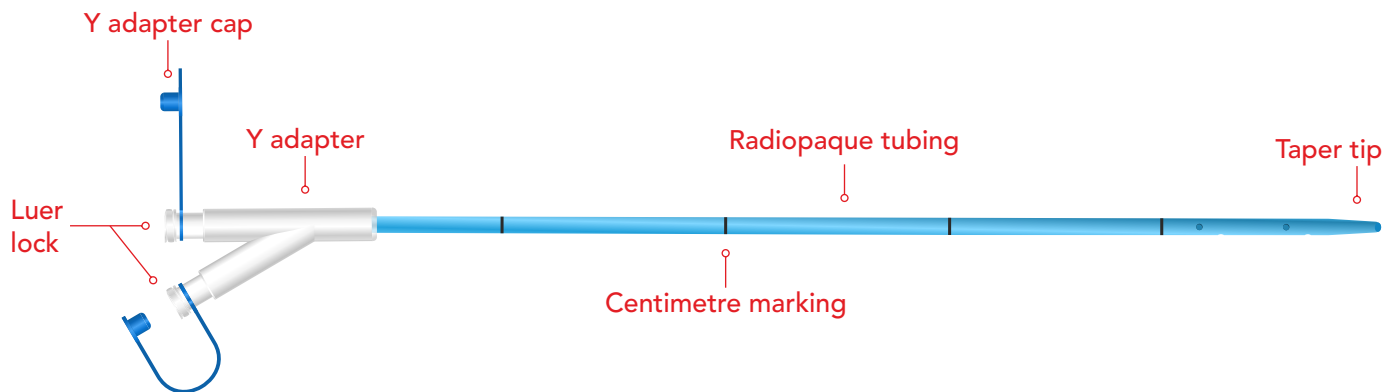
**Allwin** recommends that the product be stored in a cool and dry place. Plastic material used may degrade following extended periods of exposure to light and temperature.

## ENJFT - Endoscopic Naso Jejunal Feeding Tube



The ENJFT - Endoscopic Naso Jejunal Feeding Tube is used through channel of endoscope to provide short term enteral access for delivery of medication or nutrition to the small bowel through an endoscope.

- Soft, biocompatible polyurethane tubing material
- Compatible with 0.035" guidewire
- 5 Centimetre marking
- Radiopaque tubing for easy visualization
- Taper tip for easy insertion



Order No.	Description	Fr	Guidewire	Length (cm)	Qty. / Box
ENJFT8	Endoscopic Naso Jejunal Feeding Tube	8	0.035"	240	5
ENJFT10	Endoscopic Naso Jejunal Feeding Tube	10	0.035"	240	5

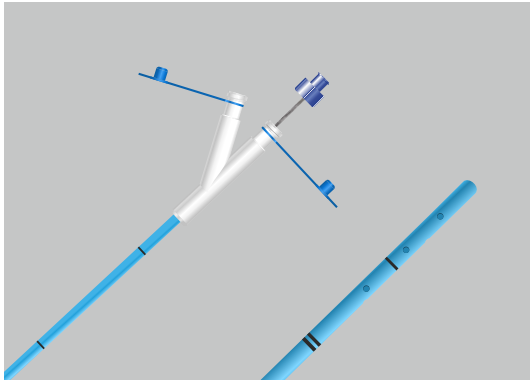
Order No.	Description (Kit)	Fr	Guidewire	Length (cm)	Qty. / Box
ENJFT8-K	Endoscopic Naso Jejunal Feeding Tube Kit	8	0.035"	240	1
ENJFT10-K	Endoscopic Naso Jejunal Feeding Tube Kit	10	0.035"	240	1

\*All products may not be available in all countries. Please contact our sales department for details.

**Each Kit includes :**

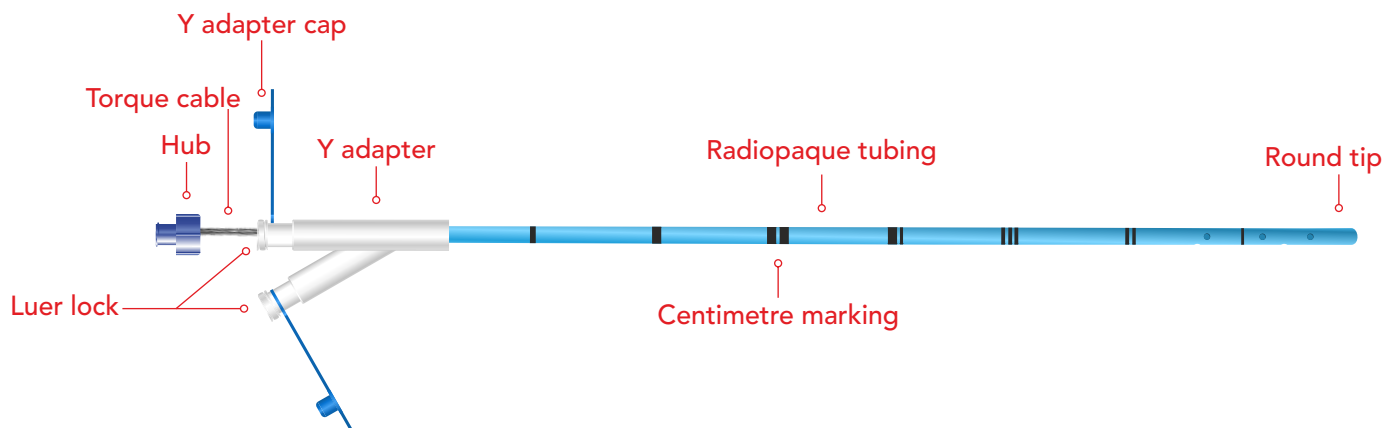
- 1 ea Feeding Tube
- 1 ea Guidewire 0.035"
- 1 ea Nasal Tube

## NJFT - Naso Jejunal Feeding Tube



The NJFT - Naso Jejunal Feeding Tube is used to provide short term enteral access for delivery of medication or nutrition to small bowel.

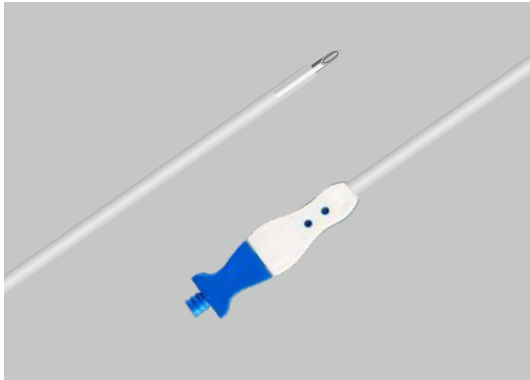
- Includes torque cable made of stainless steel spring
- Soft, pliable polyurethane tubing material
- Centimetre marking
- Radiopaque tubing for easy visualization



Order No.	Description	Fr	Length (cm)	Qty. / Box
NJFT12	Naso Jejunal Feeding Tube	12	150	5
NJFT14	Naso Jejunal Feeding Tube	14	150	5
NJFT16	Naso Jejunal Feeding Tube	16	150	5

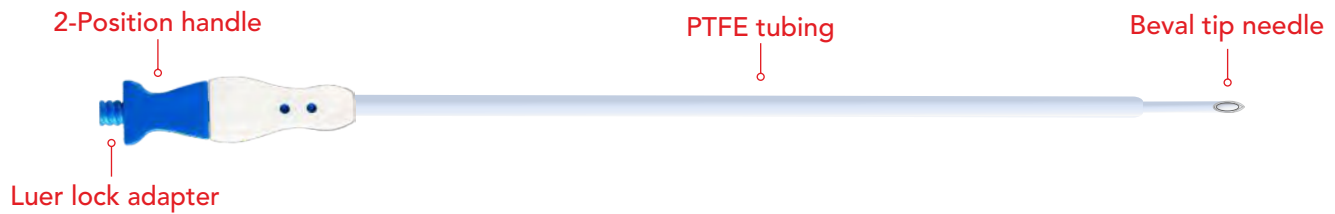
\*All products may not be available in all countries. Please contact our sales department for details.

## SCN - Sclerotherapy Needle



The SCN - Sclerotherapy Needle is used for injection into and around bleeding vessels including varices.

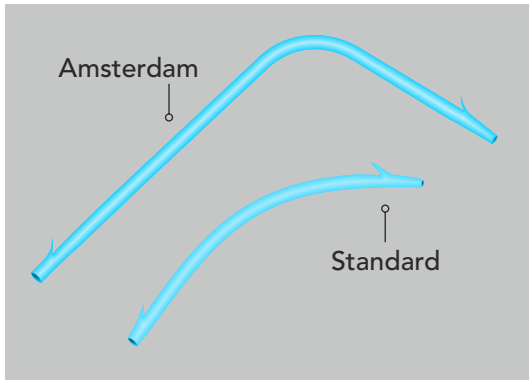
- PTFE tubing for frictionless maneuvering
- Smooth bevel tip to facilitate injection
- 2-position handle ensures safety
- Handle clicks on needle extension
- Wide range of sizes available



Order No.	Fr	Length (cm)	Gauge	Qty. / Box
SCN7/160/21	7	160	21	5
SCN7/160/23	7	160	23	5
SCN7/160/25	7	160	25	5
SCN7/240/21	7	240	21	5
SCN7/240/23	7	240	23	5
SCN7/240/25	7	240	25	5

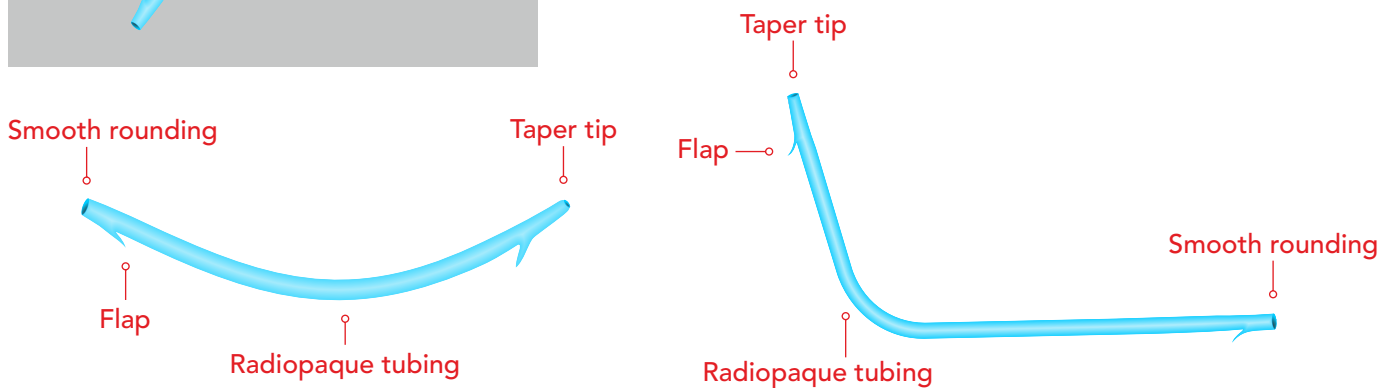
\*All products may not be available in all countries. Please contact our sales department for details.

## BS - Biliary Stents



The BS - Biliary Stents are used for drain obstructed biliary ducts.

- Radiopaque PEBAX tubing material
- Smooth rounding posterior
- Taper tip for easy insertion
- Various sizes available



Order No. (Amsterdam)	Fr	Length (cm)	Qty. / Box
BSA7/5	7	5	10
BSA7/7	7	7	10
BSA7/10	7	10	10
BSA7/12	7	12	10
BSA7/15	7	15	10
BSA10/5	10	5	10
BSA10/7	10	7	10
BSA10/10	10	10	10
BSA10/12	10	12	10
BSA10/15	10	15	10

Order No. (Amsterdam) (Kit)	Fr	Length (cm)	Qty. / Box
BSA7/5-K	7	5	1
BSA7/7-K	7	7	1
BSA7/10-K	7	10	1
BSA7/12-K	7	12	1
BSA7/15-K	7	15	1
BSA10/5-K	10	5	1
BSA10/7-K	10	7	1
BSA10/10-K	10	10	1
BSA10/12-K	10	12	1
BSA10/15-K	10	15	1

Order No. (Standard)	Fr	Length (cm)	Qty. / Box
BSS7/5	7	5	10
BSS7/7	7	7	10
BSS7/10	7	10	10
BSS7/12	7	12	10
BSS7/15	7	15	10
BSS10/5	10	5	10
BSS10/7	10	7	10
BSS10/10	10	10	10
BSS10/12	10	12	10
BSS10/15	10	15	10

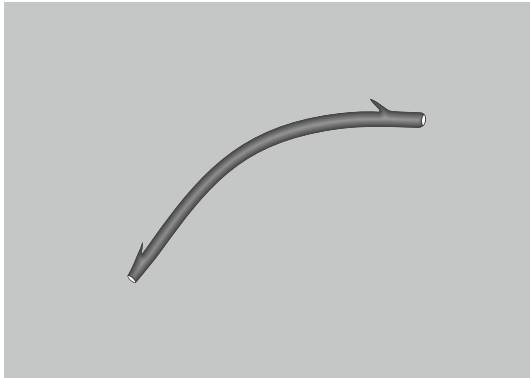
Order No. (Standard) (Kit)	Fr	Length (cm)	Qty. / Box
BSS7/5-K	7	5	1
BSS7/7-K	7	7	1
BSS7/10-K	7	10	1
BSS7/12-K	7	12	1
BSS7/15-K	7	15	1
BSS10/5-K	10	5	1
BSS10/7-K	10	7	1
BSS10/10-K	10	10	1
BSS10/12-K	10	12	1
BSS10/15-K	10	15	1

\*All products may not be available in all countries. Please contact our sales department for details.

**Kit includes :**

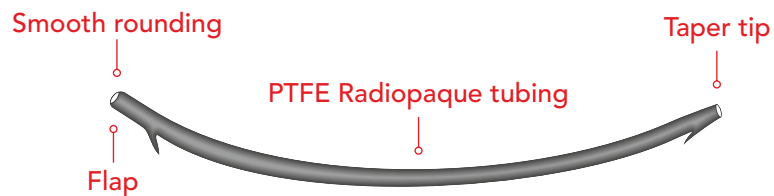
Biliary Stents • Majestick - Biliary Stent Introducer • 0.035" PTFE Guidewire 400cm

## BSST - Biliary Stents Standard PTFE



The BSST - Biliary Stents Standard PTFE are used for drain obstructed biliary ducts.

- Radiopaque PTFE tubing material
- Smooth rounding posterior
- Taper tip for easy insertion
- Various sizes available



Order No.	Fr	Length (cm)	Qty. / Box
BSST7/5	7	5	10
BSST7/7	7	7	10
BSST7/10	7	10	10
BSST7/12	7	12	10
BSST7/15	7	15	10
BSST10/5	10	5	10
BSST10/7	10	7	10
BSST10/10	10	10	10
BSST10/12	10	12	10
BSST10/15	10	15	10

Order No. (Kit)	Fr	Length (cm)	Qty. / Box
BSST7/5-K	7	5	1
BSST7/7-K	7	7	1
BSST7/10-K	7	10	1
BSST7/12-K	7	12	1
BSST7/15-K	7	15	1
BSST10/5-K	10	5	1
BSST10/7-K	10	7	1
BSST10/10-K	10	10	1
BSST10/12-K	10	12	1
BSST10/15-K	10	15	1

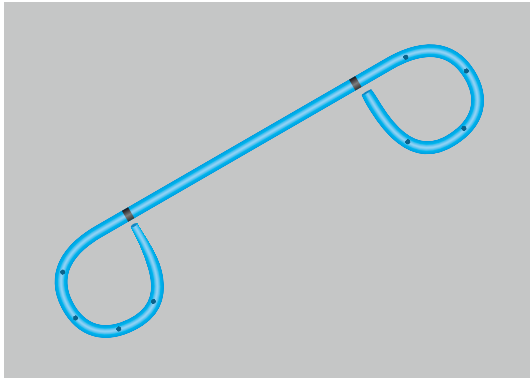
\*All products may not be available in all countries. Please contact our sales department for details.

**Kit includes :**

- Biliary Stents
- Majestick - Biliary Stent Introducer
- 0.035" PTFE Guidewire 400cm

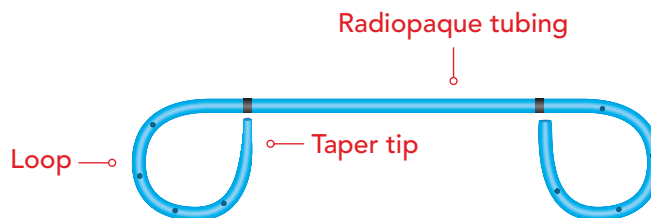


## BSDP - Biliary Stents Double Pigtail



The BSDP-Biliary Stents Double Pigtail are used for drain obstructed biliary ducts.

- Radiopaque polyurethane tubing material
- Taper tip for easy insertion
- Smooth rounding posterior
- Various sizes available



Order No.	Fr	Length (cm)	Qty. / Box
BS-DP5/4	5	4	10
BS-DP5/7	5	7	10
BS-DP5/10	5	10	10
BS-DP7/4	7	4	10
BS-DP7/7	7	7	10
BS-DP7/10	7	10	10
BS-DP10/4	10	4	10
BS-DP10/7	10	7	10
BS-DP10/10	10	10	10

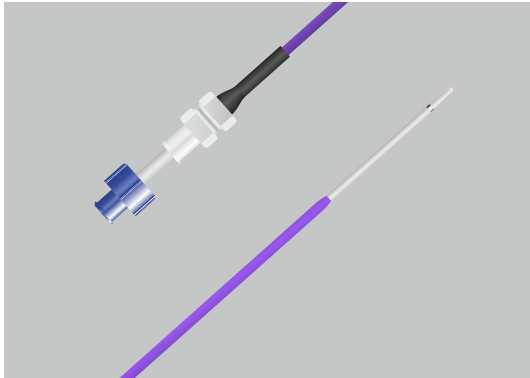
Order No.	Fr	Length (cm)	Qty. / Box
BS-DP 5/4-K	5	4	1
BS-DP 5/7-K	5	7	1
BS-DP 5/10-K	5	10	1
BS-DP 7/4-K	7	4	1
BS-DP 7/7-K	7	7	1
BS-DP 7/10-K	7	10	1
BS-DP 10/4-K	10	4	1
BS-DP 10/7-K	10	7	1
BS-DP 10/10-K	10	10	1

\*All products may not be available in all countries. Please contact our sales department for details.

**Kit includes :**

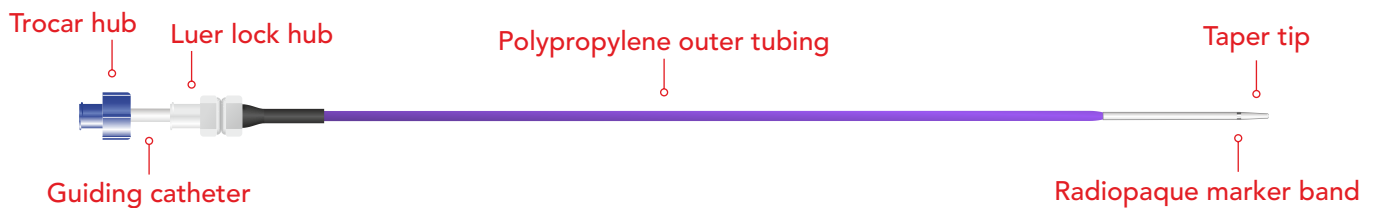
- Biliary Stents
- Majestick - Biliary Stent Introducer
- 0.035" PTFE Guidewire 400cm

## Majestick - Biliary Stents Introducer



The Majestick - Biliary Stents Introducer is used for endoscopic biliary placement.

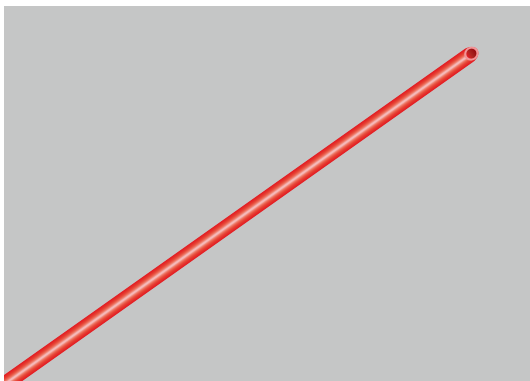
- PTFE material with radiopaque band marker
- 6 Fr guiding catheter
- Polypropylene 10 Fr pusher catheter
- Glides smoothly over guidewire
- Trocar hub with luer lock



Order No.	Application Stent Size	Guiding Catheter	Guiding Catheter Length	Pusher Catheter Size	Pusher Catheter Length	Qty. / Box
BSI10	10 Fr	6 Fr	208 cm	10 Fr	170 cm	5

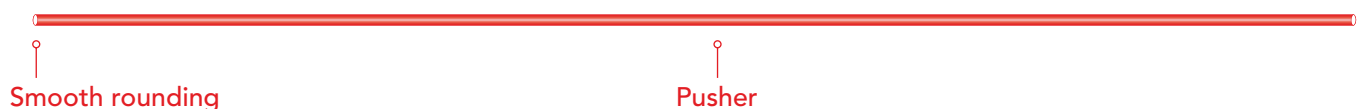
\*All products may not be available in all countries. Please contact our sales department for details.

## Pusher



The Pusher is used for positioning of biliary stents.

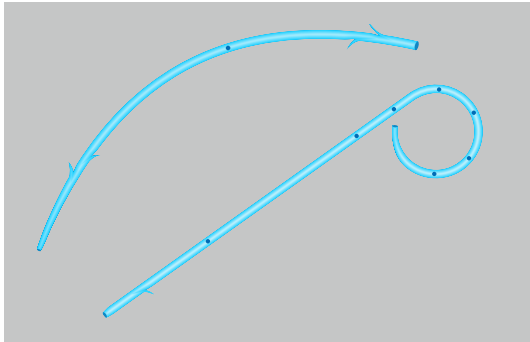
- Made with polypropylene material
- Available in two sizes 5 Fr and 7 Fr



Order No.	Fr	Length (cm)	Qty. / Box
P5/170	5	170	10
P7/170	7	170	10

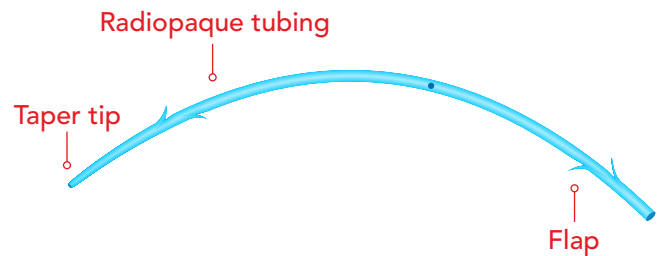
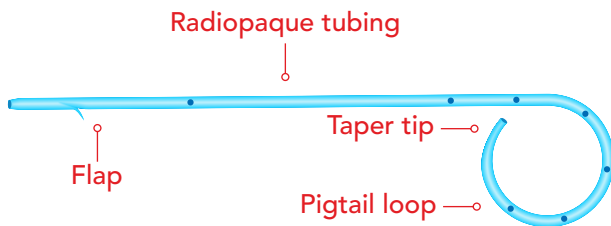
\*All products may not be available in all countries. Please contact our sales department for details.

## PAN Stents



The PAN Stents are used for drainage of obstructed pancreatic ducts.

- Radiopaque PEBAX tubing material
- Rounded end
- Pusher components available separately - P5/170 or P7/170
- Taper tip for easy insertion
- Various types & sizes available



Order No. (Pigtail)	Fr	Length (cm)	Qty. / Box
PSP5/3	5	3	10
PSP5/5	5	5	10
PSP5/7	5	7	10
PSP5/9	5	9	10
PSP5/12	5	12	10
PSP7/3	7	3	10
PSP7/5	7	5	10
PSP7/7	7	7	10
PSP7/9	7	9	10
PSP7/12	7	12	10

Order No. (Pigtail) (Kit)	Fr	Length (cm)	Qty. / Box
PSP5/3-K	5	3	1
PSP5/5-K	5	5	1
PSP5/7-K	5	7	1
PSP5/9-K	5	9	1
PSP5/12-K	5	12	1
PSP7/3-K	7	3	1
PSP7/5-K	7	5	1
PSP7/7-K	7	7	1
PSP7/9-K	7	9	1
PSP7/12-K	7	12	1

Order No. (Curved)	Fr	Length (cm)	Qty. / Box
PSC5/3	5	3	10
PSC5/5	5	5	10
PSC5/7	5	7	10
PSC5/9	5	9	10
PSC5/12	5	12	10
PSC7/3	7	3	10
PSC7/5	7	5	10
PSC7/7	7	7	10
PSC7/9	7	9	10
PSC7/12	7	12	10

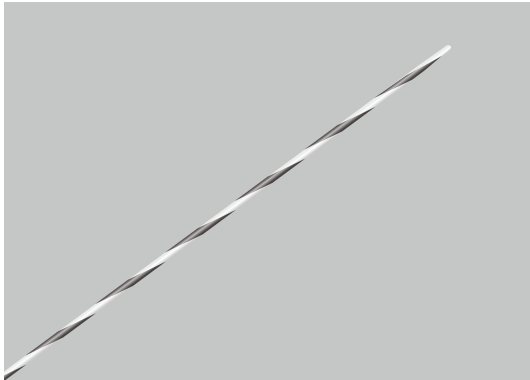
Order No. (Curved) (Kit)	Fr	Length (cm)	Qty. / Box
PSC5/3-K	5	3	1
PSC5/5-K	5	5	1
PSC5/7-K	5	7	1
PSC5/9-K	5	9	1
PSC5/12-K	5	12	1
PSC7/3-K	7	3	1
PSC7/5-K	7	5	1
PSC7/7-K	7	7	1
PSC7/9-K	7	9	1
PSC7/12-K	7	12	1

\*All products may not be available in all countries. Please contact our sales department for details.

### Kit includes :

- Pancreatic Stents
- 0.035" PTFE Guidewire 400cm
- Pusher

## Cobra Nitinol Guidewire



The Cobra Nitinol Guidewire is used for percutaneous entry into vessel using the seldinger technique or endoscopic access.

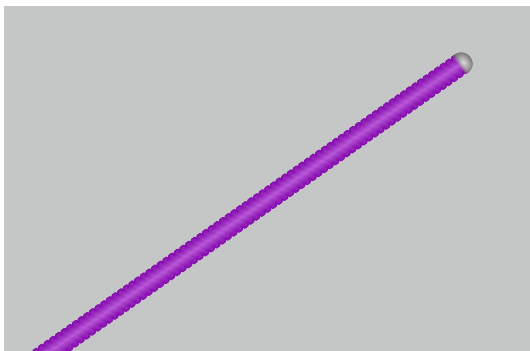
- Kink resistant nitinol shaft
- Black and white stripes for easier visualization
- The guidewire provides an ideal blend of stiffness and flexibility for effective control and navigation through a tortuous anatomy
- Straight flexible tip



Order No.	Diameter	Length (cm)	Qty. / Box
CGS150-25	0.025"	150	5
CGS150-32	0.032"	150	5
CGS150-35	0.035"	150	5
CGS450-25	0.025"	450	1
CGS450-32	0.032"	450	1
CGS450-35	0.035"	450	1

\*All products may not be available in all countries. Please contact our sales department for details.

## HyGuide Hydrophilic Guidewire



The HyGuide Hydrophilic Guidewire is used for access ureter during routine and difficult cases.

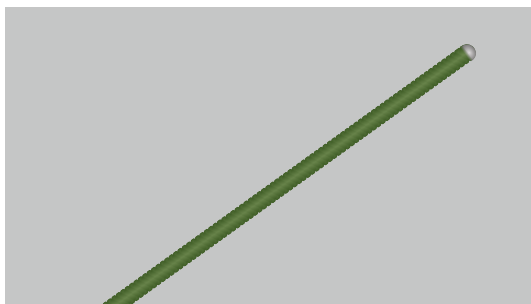
- Exacting tolerance of each wire facilitates easy and reliable instrument delivery
- Hydrophilic coating permits smooth navigation through tortuous anatomy
- Non-kink shaft



Order No.	Tip	Diameter	Coated	Length (cm)	Qty. / Box
HGSF150-35	Straight Fixed Core	0.035"	Hydrophilic	150	5

\*All products may not be available in all countries. Please contact our sales department for details.

## FlexiGuide Standard - Straight Tip Guidewire



The FlexiGuide Standard - Straight Tip Guidewire is used for percutaneous entry into vessel using the seldinger technique or for endoscopic access.

- Straight tip fixed core
- PTFE coating allows smooth catheter insertion and stent tracking

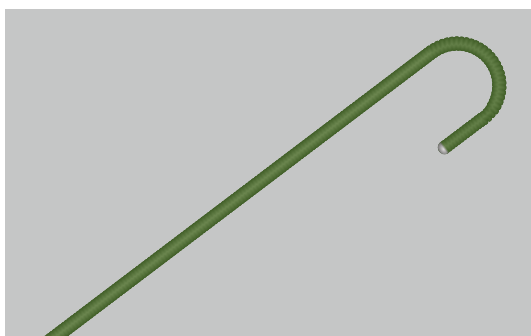
PTFE coating

Straight tip

Order No.	Tip	Diameter	Length (cm)	Qty. / Box
SFT150-18	Straight Fixed Core, PTFE Coated	0.018"	150	5
SFT150-25	Straight Fixed Core, PTFE Coated	0.025"	150	5
SFT150-28	Straight Fixed Core, PTFE Coated	0.028"	150	5
SFT150-32	Straight Fixed Core, PTFE Coated	0.032"	150	5
SFT150-35	Straight Fixed Core, PTFE Coated	0.035"	150	5
SFT150-38	Straight Fixed Core, PTFE Coated	0.038"	150	5

\*All products may not be available in all countries. Please contact our sales department for details.

## FlexiGuide Standard - J Tip Guidewire



The FlexiGuide Standard - J Tip Guidewire is used for percutaneous entry into vessel using the seldinger technique or for endoscopic access.

- J Tip fixed core
- PTFE coating allows smooth catheter insertion and stent tracking

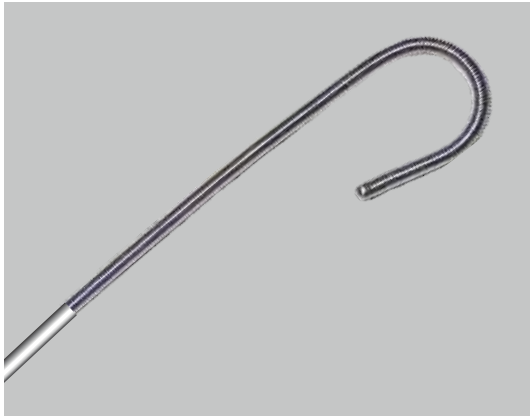
PTFE coating

J tip

Order No.	Tip	Diameter	Length (cm)	Qty. / Box
JFT150-25-3	3mm, J-Tip Fixed Core, PTFE Coated	0.025"	150	5
JFT150-28-3	3mm, J-Tip Fixed Core, PTFE Coated	0.028"	150	5
JFT150-32-3	3mm, J-Tip Fixed Core, PTFE Coated	0.032"	150	5
JFT150-35-3	3mm, J-Tip Fixed Core, PTFE Coated	0.035"	150	5
JFT150-38-3	3mm, J-Tip Fixed Core, PTFE Coated	0.038"	150	5

\*All products may not be available in all countries. Please contact our sales department for details.

## TITAN Lunderquist Guidewire



The TITAN Lunderquist Guidewire is used for percutaneous entry into vessel using the seldinger technique or for endoscopic access.

- Firm and easy to introduce
- Shapeable tip facilitates accurate placement even in difficult anatomy
- Available in 100 cm length
- 3 mm J Tip



Order No.	Tip	Diameter	Length (cm)	Qty. / Box
LQJ100-35-3	3 mm J-Tip	0.035"	100	1

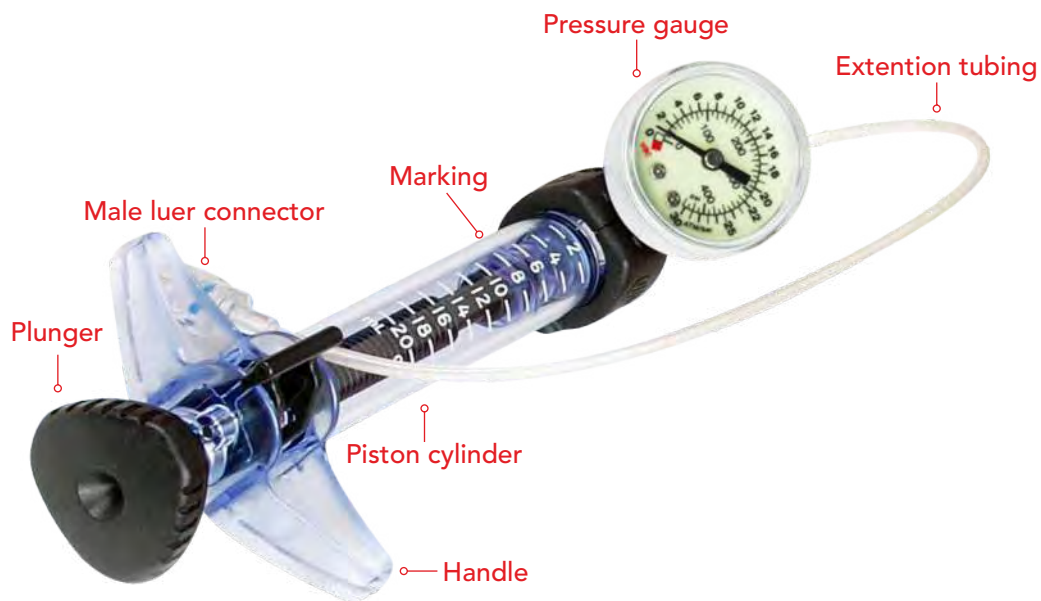
\*All products may not be available in all countries. Please contact our sales department for details.

## Advanced Inflation Device



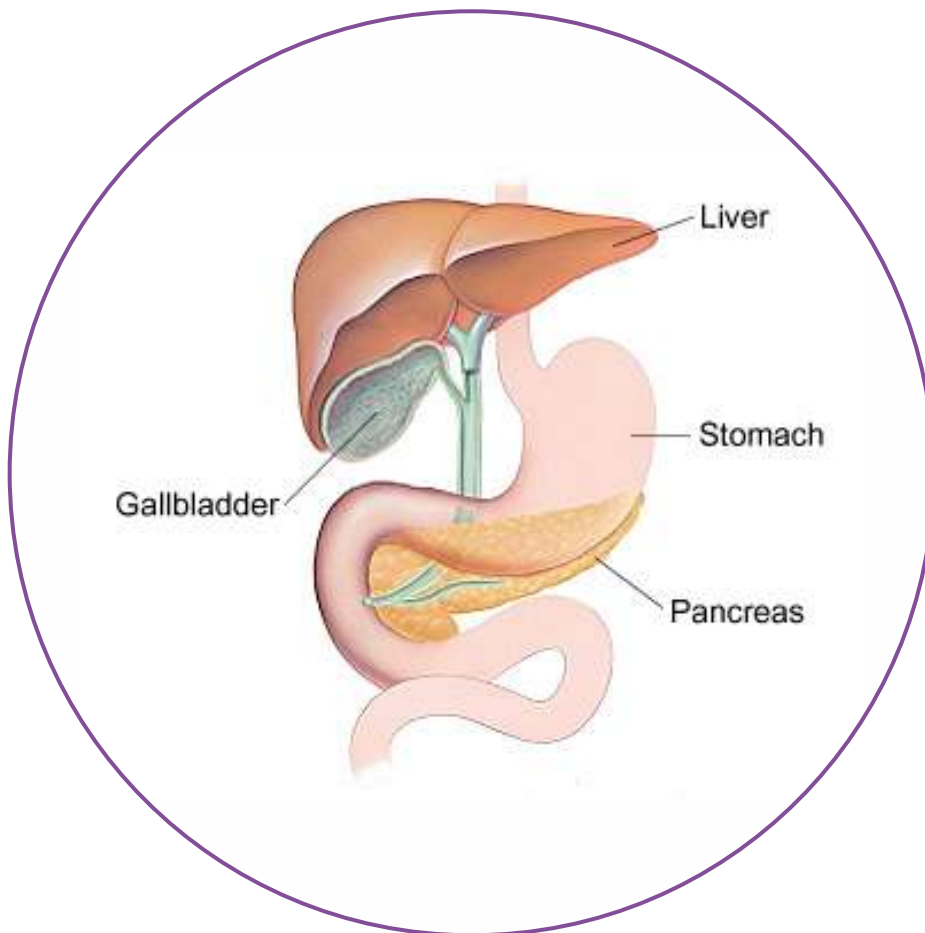
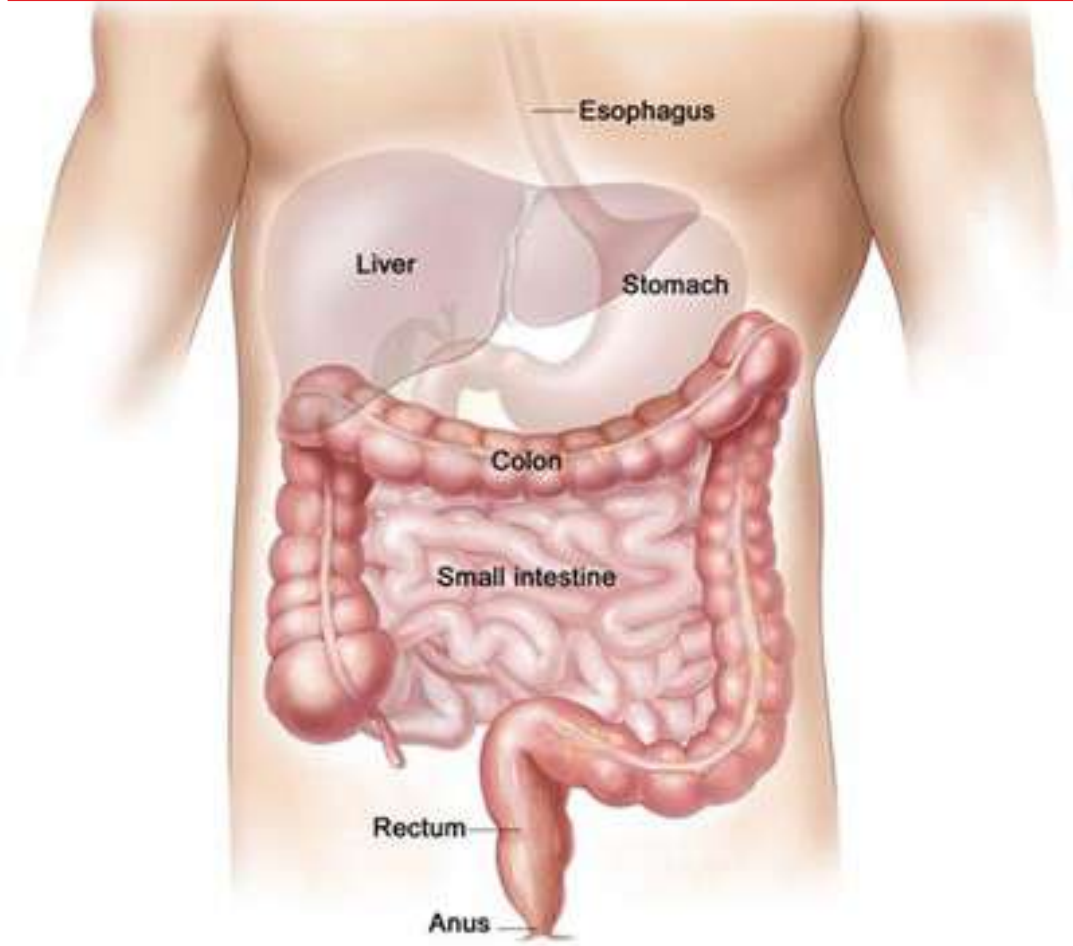
The Advanced Inflation Device is used with balloon dilation catheter to monitor inflation pressure.

- Ergonomic design facilitates excellent eye to hand co-ordination
- Efficient intra-cam locking mechanism allows to maintain pressure and guarantees fast and automatic release
- Superior design with grained surface and slip free lever ensures maximum grip even with wet hands
- Pressure gauge ensures fatigue free readability
- Upto 30/26 atm analogue pressure range
- Registers immediately without pressure decay or drift
- Easy locking and unlocking



Order No.	Description	Qty. / Box
IDA20	Inflation Device Advanced 20cc	1

\*All products may not be available in all countries. Please contact our sales department for details.







**US Sales**

✉ sales.usa@allwinmedical.com

☎ +1 714-572-1709

**India Sales**

✉ sales.india@allwinmedical.com

☎ +91 99870-84563

**Worldwide Sales (Excluding India/US)**

✉ sales@allwinmedical.com

☎ +91 95949-81581

