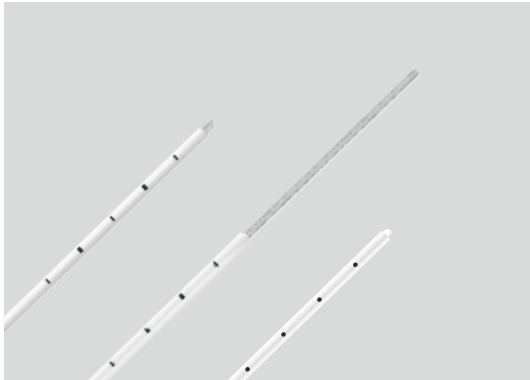
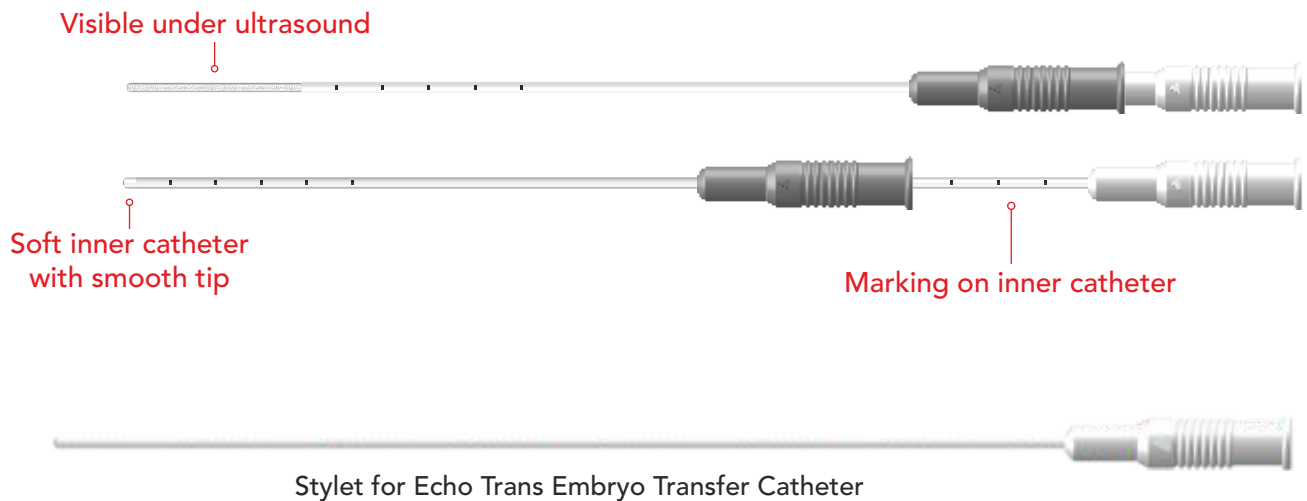


ECHO TRANS Embryo Transfer Catheter



The ECHO TRANS Embryo Transfer Catheter is used to introduce in-vitro fertilized (IVF) embryos into the uterine cavity.

- Echogenic inner catheter facilitates enhanced visibility under ultrasound
- A soft inner catheter with a smooth tip
- Marking on inner catheter and outer sheath
- Shapeable outer sheath
- Stylet for outer sheath available separately



Order No.	Description	Catheter Length (cm)	Qty. / Box
ET-ETC23	ECHO TRANS Embryo Transfer Catheter	23	10
ET-ETC18	ECHO TRANS Embryo Transfer Catheter	18	10
STY23	Stylet for Embryo Transfer Catheter Embryo Trans / Echo Trans	23	10
STY18	Stylet for Embryo Transfer Catheter Embryo Trans / Echo Trans	18	10
STY23-OS	Stylet for Introducing Catheter 23cm with Outer Sheath	23	10
STY18-OS	Stylet for Introducing Catheter 18cm with Outer Sheath	18	10

*All products may not be available in all countries. Please contact our sales department for details.



Full echogenic
inner catheter